

**Boston  
Scientific**

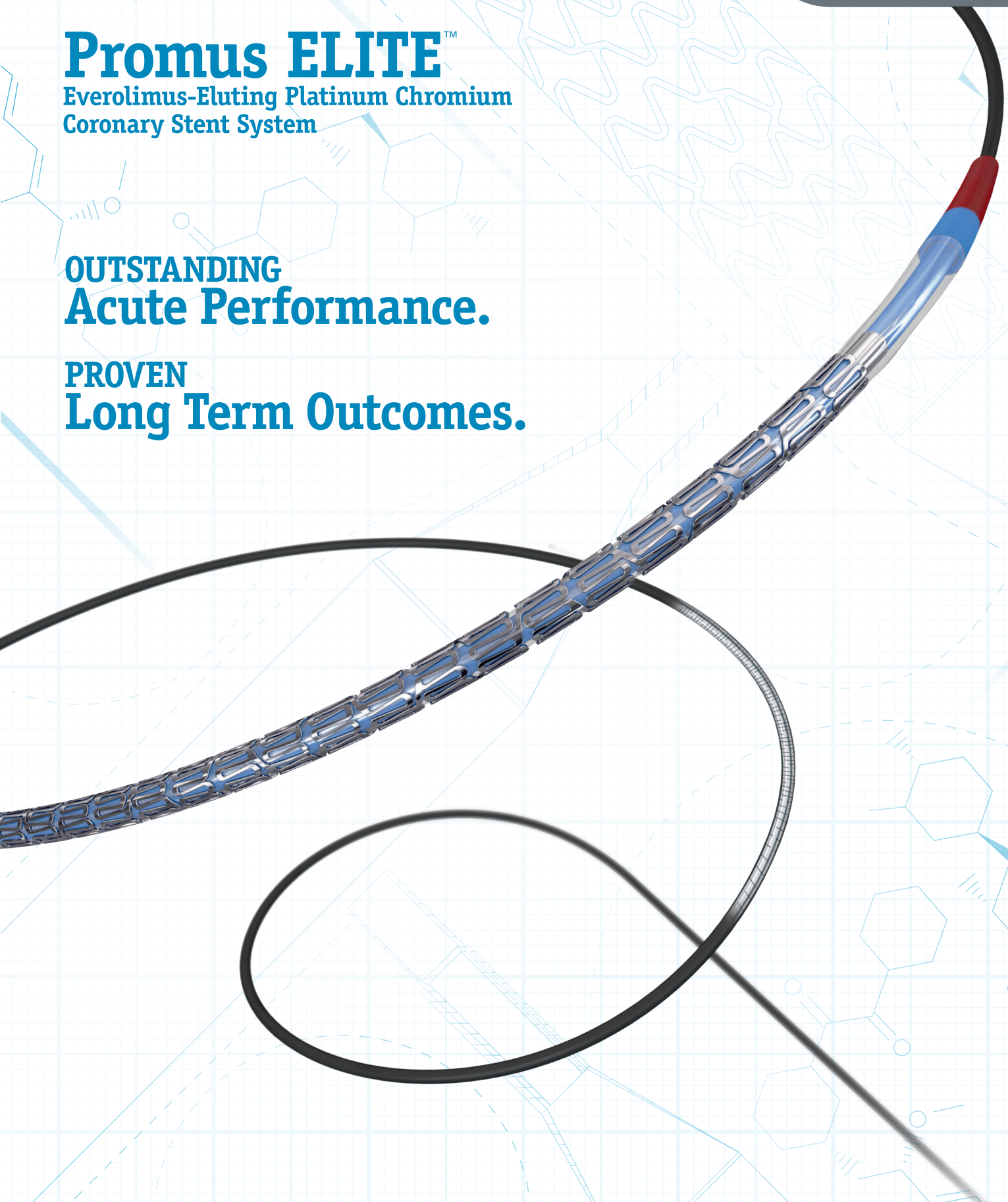
Advancing science for life™

# Promus ELITE™

Everolimus-Eluting Platinum Chromium  
Coronary Stent System

**OUTSTANDING  
Acute Performance.**

**PROVEN  
Long Term Outcomes.**

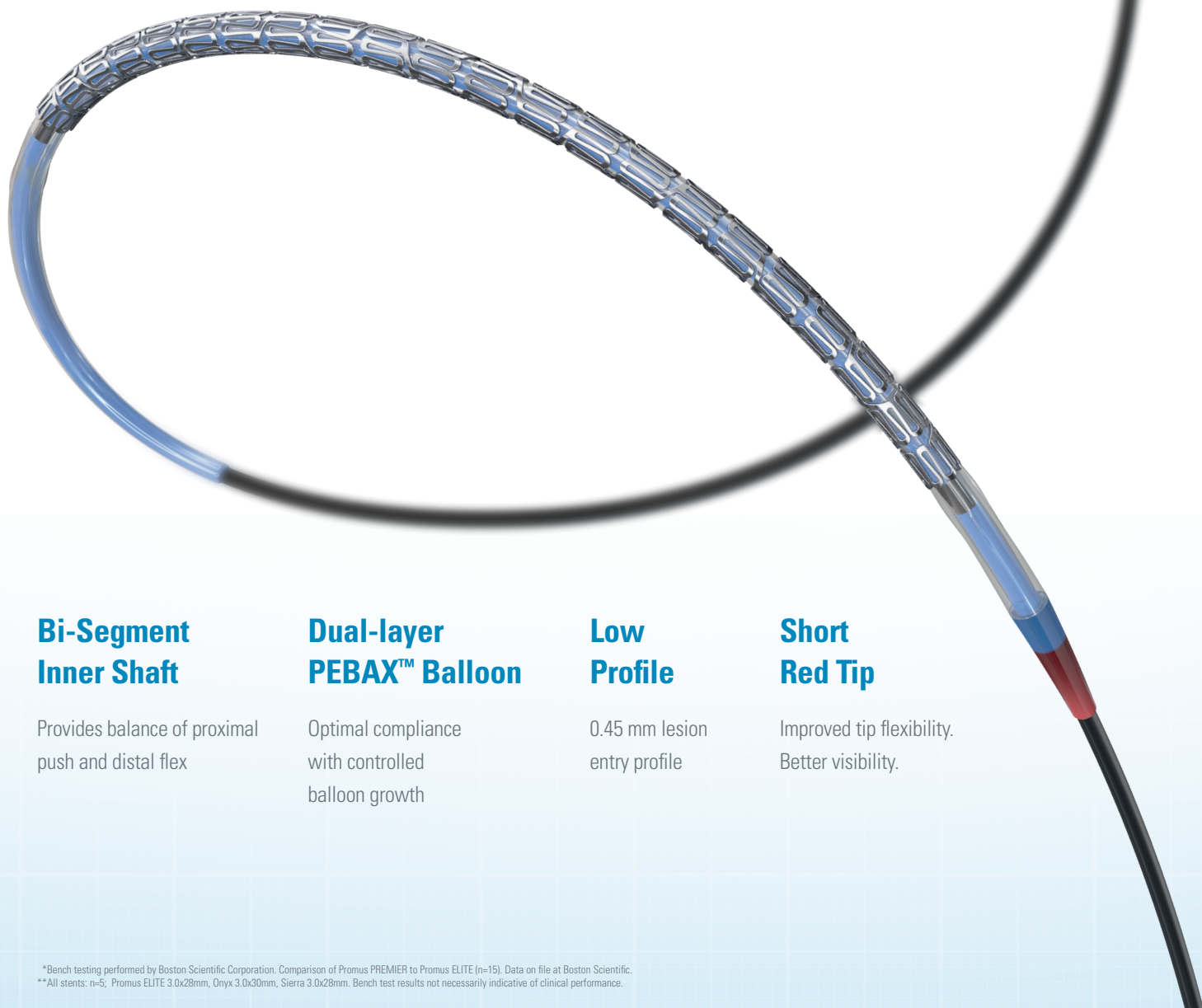


# Promus ELITE™

## Everolimus-Eluting Platinum Chromium Coronary Stent System

The Promus ELITE Stent System builds upon the proven performance of the Promus permanent polymer DES family and the platinum chromium (PtCr) platform.

Combining a unique customized stent architecture and the market-leading Everolimus and PVDF-HFP polymer combination with an enhanced delivery system for better pushability and trackability – offering outstanding deliverability and acute performance.



### Bi-Segment Inner Shaft

Provides balance of proximal  
push and distal flex

### Dual-layer PEBAX™ Balloon

Optimal compliance  
with controlled  
balloon growth

### Low Profile

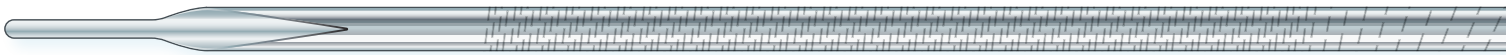
0.45 mm lesion  
entry profile

### Short Red Tip

Improved tip flexibility.  
Better visibility.

# Outstanding Deliverability

Enhanced delivery system for optimal balance of  
pushability, flexibility, and trackability



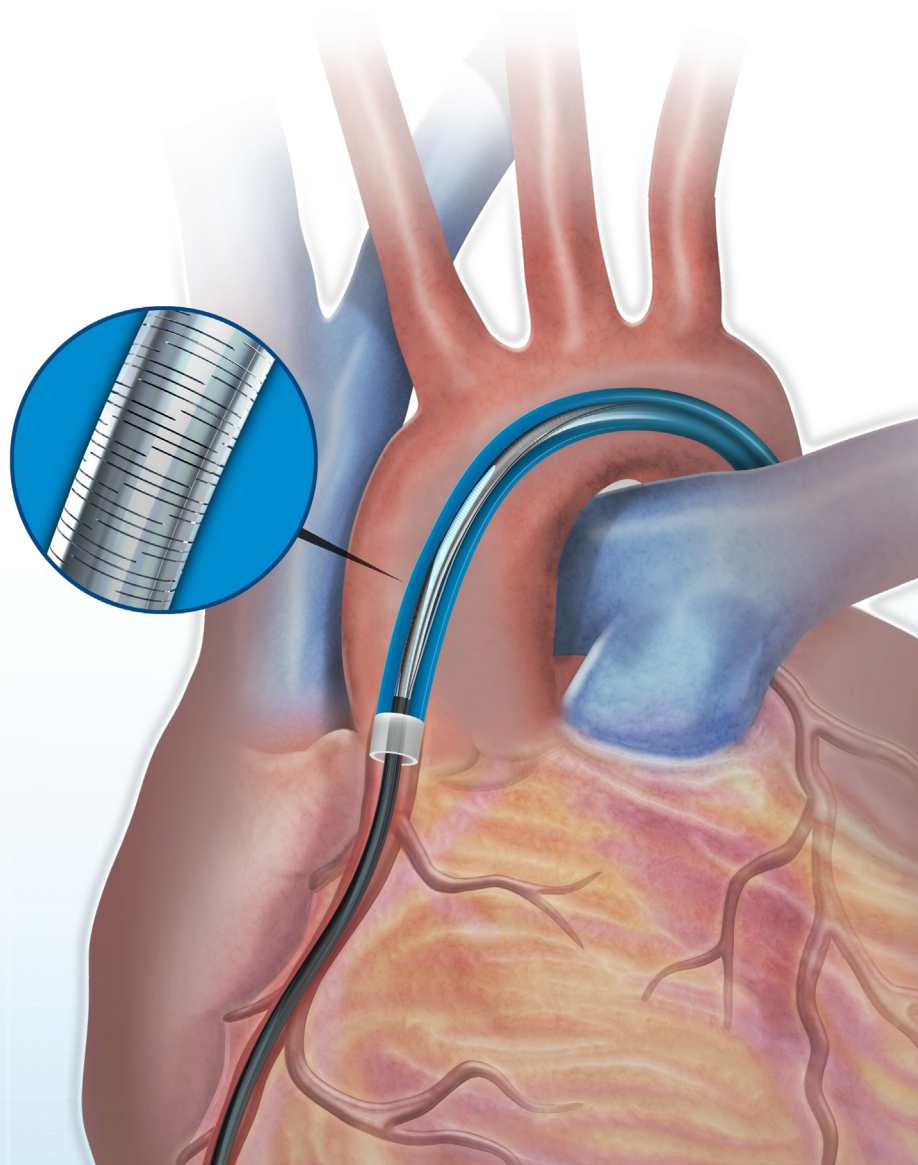
## Proprietary Laser-Cut Hypotube Technology

15% increase  
in pushability\*

19% more trackable  
than competitive DES\*\*

Variable cut pattern specifically  
designed for coronary anatomy

More than 300 cuts  
over 100 mm length

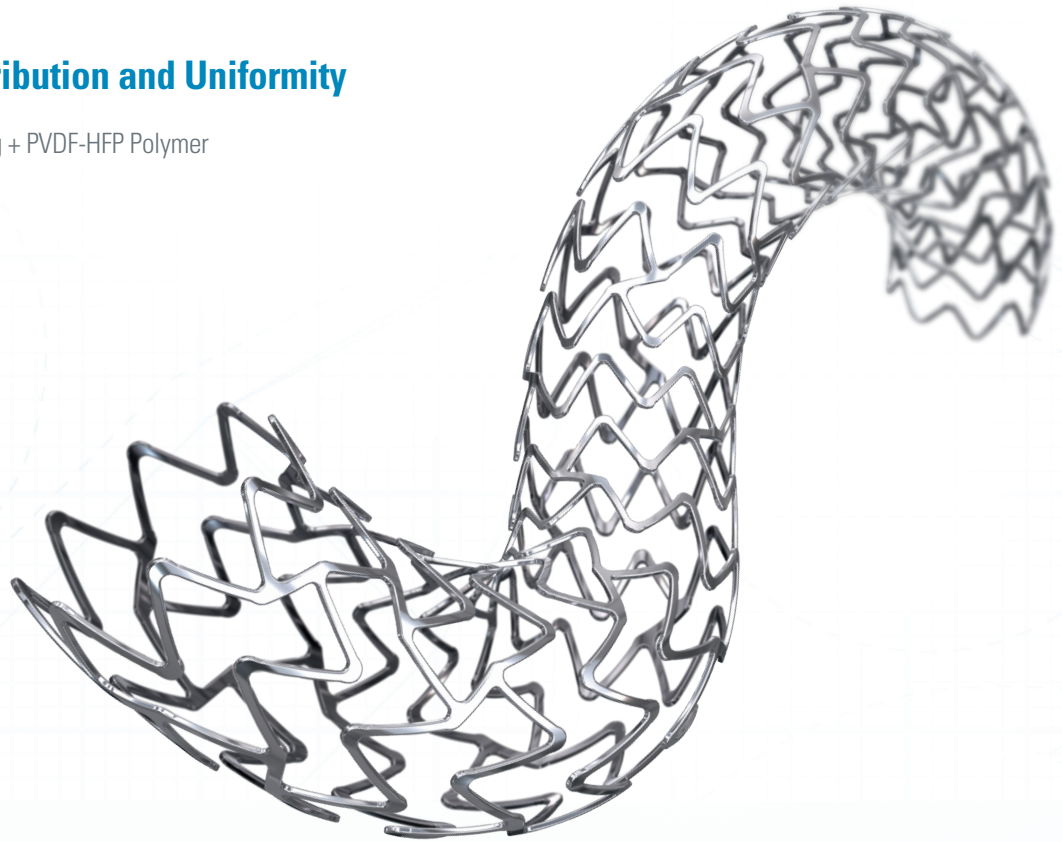


# Trusted Stent Platform

Customized stent architecture design offers  
the ideal balance of strength and flexibility

## Excellent Drug Distribution and Uniformity

Market-leading Everolimus drug + PVDF-HFP Polymer



### Superior Conformability

Up to 8x more  
conformable\*

### Unmatched Radial Strength

Up to 23% higher  
radial strength\*

### Low Recoil

50% less recoil than  
competitive DES\*

### Best-in-Class Visibility

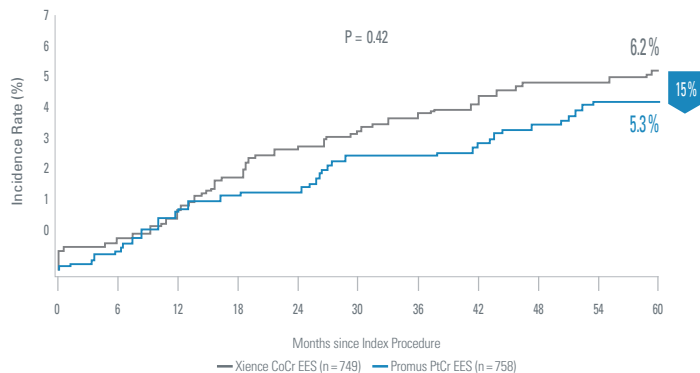
Unique PtCr  
stent platform



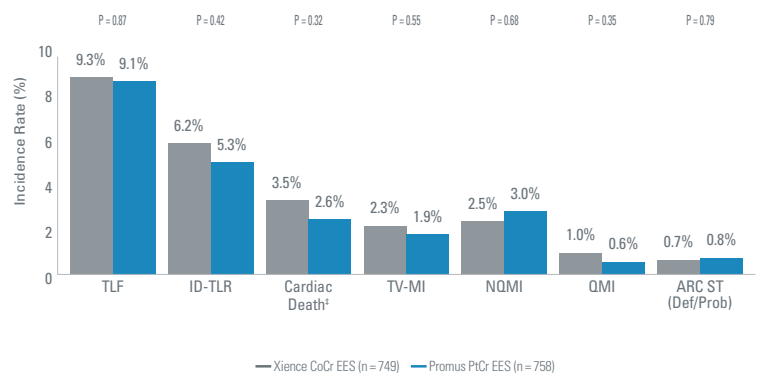
# Proven Clinical Outcomes

Proven clinical outcomes in 11 studies  
of almost 10,000 patients in the PLATINUM Family of trials

Numerically Lower Ischemia-Driven TLR through 5 Years<sup>1</sup>



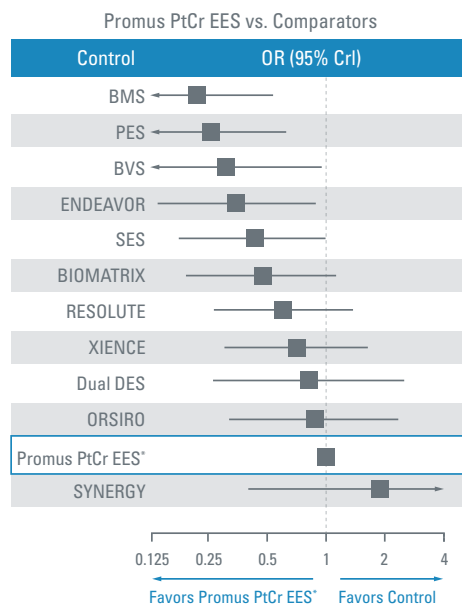
Numerically Lower Event Rates through 5 years<sup>1</sup>



## Outstanding safety shown in real-world use

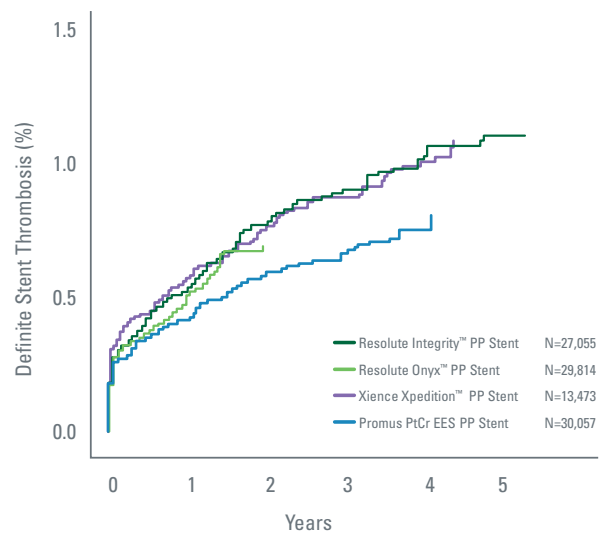
Kang Network Meta-Analysis<sup>2</sup>

Promus PtCr EES ranked #2 for the lowest relative risk of Def/Prob Stent Thrombosis



SCAAR Registry<sup>3</sup>

Promus PtCr EES reported numerically lowest Permanent Polymer ST rates in real-world SCAAR Registry

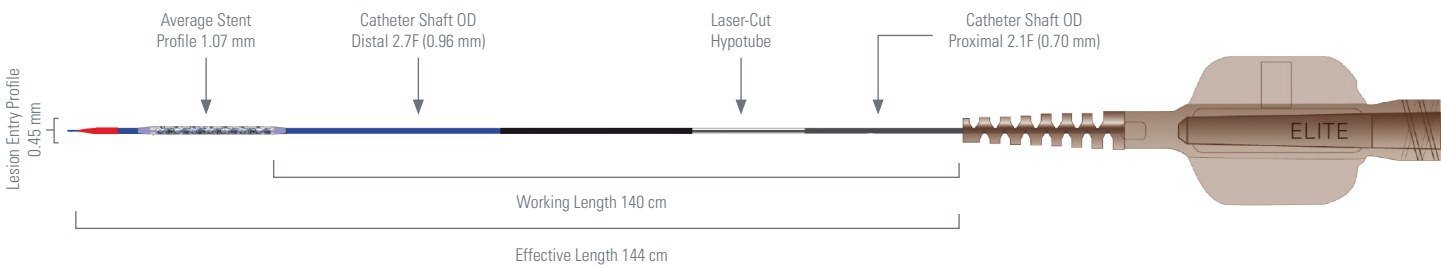


All stents implanted 2007-September 28, 2017; Unadjusted

More than 8 Million Promus PtCr DES implanted worldwide<sup>§</sup>

Caution should be taken in interpreting study results, as some stents had limited numbers of comparisons, and some of the studies had a potential risk of bias. \*All Promus PtCr-EES stents, also includes PROMUS Element, PROMUS Element Plus and Promus PREMIER. Def/prob ST was available in 110 studies with 111,088 patients. † Deaths due to unknown causes were adjudicated as cardiac death. § Implants based on Promus DES units sold through March 2018. Includes (Promus, Promus Element, Promus Element Plus, Promus PREMIER). 1. Stone, GW. PLATINUM Workhorse Trial. ACC 2015. PLATINUM Clinical Trial Program studied the PROMUS Element™ Stent (Promus PtCr EES) and the Xience V™ Stent (Xience CoCr EES). 2. Kang, S et al. J Am Coll Cardiol Interv. doi:10.1016/j.jcin.2016.03.038 3. Adapted from Presentation by Stefan James, MD at TCT 2017 (Swedish SCAAR database, real-world outcomes of latest DES generations).

Ordering Information



(mm)	8	12	16	20	24	28	32	38
2.25	H7493941308220	H7493941312220	H7493941316220	H7493941320220	H7493941324220	H7493941328220	H7493941332220	n/a
2.5	H7493941308250	H7493941312250	H7493941316250	H7493941320250	H7493941324250	H7493941328250	H7493941332250	H7493941338250
2.75	H7493941308270	H7493941312270	H7493941316270	H7493941320270	H7493941324270	H7493941328270	H7493941332270	H7493941338270
3.0	H7493941308300	H7493941312300	H7493941316300	H7493941320300	H7493941324300	H7493941328300	H7493941332300	H7493941338300
3.5	H7493941308350	H7493941312350	H7493941316350	H7493941320350	H7493941324350	H7493941328350	H7493941332350	H7493941338350
4.0	H7493941308400	H7493941312400	H7493941316400	H7493941320400	H7493941324400	H7493941328400	H7493941332400	H7493941338400

**Boston  
Scientific**  
Advancing science for life™

**Interventional Cardiology**  
300 Boston Scientific Way  
Marlborough, MA 01752-1234  
[www.bostonscientific.com](http://www.bostonscientific.com)

To order product or for more information  
contact customer service at 1.888.272.1001.

© 2018 Boston Scientific Corporation  
or its affiliates. All rights reserved.

IC-530906-AA-EU

Caution: The law restricts these devices to sale by or on the order of a physician. Indications, contraindications, warnings, and instructions for use can be found in the product labeling supplied with each device. Information for the use only in countries with applicable health authority product registrations. Information contained herein is for use or distribution outside the US, France, and Japan only.